

Options Online Guide

Version 2.27
1st March 2010

Options Online Guide

- What is Options?
- What's New in Version 2?
- Overview
- Options Menu Items
- Setting up Options
- Options Initialisation File Specification
- OLE Interface
- Processing Documents with Existing Passwords
- Credits
- Further Information

Options Online Guide

What is Options?

Options is an Acrobat plug-in for setting the open, security, general information (Title, Subject etc.) and other parameters of all the PDF files within a selected directory (or folder). Two neat features about Options are:

1. It will optionally process recursively down from the specified directory.
2. It enables the user to process security-protected files, at least, those to which the user possesses the appropriate passwords.

What's New in Version 2?

Options 2.0 enables users to control security and document open options; copy hyperfeatures from other files; set document information and text form fields using a CSV file; automatically add multiple indexes to documents; and more... It can also process documents placed in watched directories and be used as an OLE server (Windows only).

Options Online Guide

System Requirements

Options works with Acrobat versions 2.1 and later — because it actively alters PDF files it is *not* available as a Reader plug-in.

How Does it Work?

There are three stages to using Options to apply options to a batch of PDF files:

1. Specify required open, security options, and other options to be applied later.
2. Select a folder/directory (and optionally choose to process all sub-folders/directories by selecting the Recursive option).
3. Apply the specified options.

How Can I Make it Work?

1. Interactive use using dialogues.
2. Passing information using OLE (Windows only).
3. Putting PDF files in watched directories.

Options Online Guide

Overview

Options works using settings specified in an options.ini file. This file contains all the settings that will be used on the selected files or directories.

The default options.ini file is stored in Acrobat's plug-ins directory, along with the plug-in itself. Options will use any options.ini file that it finds at the top level of any directory or single file that it is asked to process. This allows different options to be applied to files in different directories.

As Options processes files it creates a log file called options.log in the same directory as the options.ini file that it is using. If the Options OLE server is being used, the log file will be in Acrobat's plug_ins directory.

Options Online Guide

Options Menu Items

Options adds two menu items and a sub-menu to Acrobat:

Help > About Plug_ins > Options

Selecting this displays information about the version of Options that you are running.

Help > Plug-in Help > Options

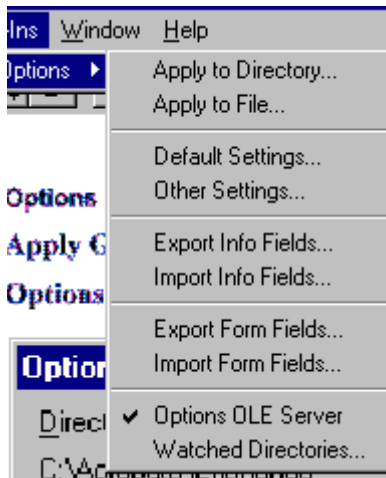
Clicking on this menu item opens this Options Online Guide.

Options Online Guide

Advanced > Options

This sub-menu drives Options and has ten menu items grouped into five pairs: Apply, Set, Information Fields, Form Fields and Other.

- The ‘Apply To ...’ group contains the commands for applying the options to particular files or directories.
- The ‘Settings’ group contains commands for setting default and custom options settings.
- The ‘Information Fields’ group contains commands for both importing and exporting



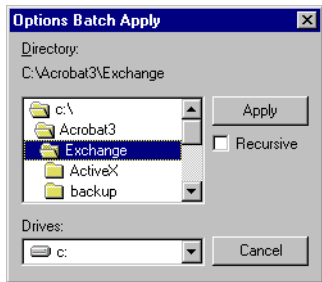
Options Online Guide

document information fields from/to a specified CSV file.

- The ‘Form Fields’ group provides commands for importing and exporting text form field values from/to a CSV file.
- The ‘Other’ group provides two commands: one turns the Options OLE server (Windows only) on or off, and the other enables the user to specify the watched directories.

Options Online Guide

Apply Group



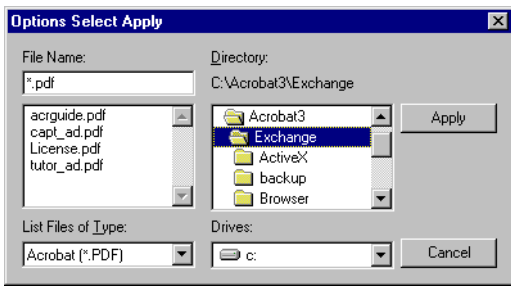
Options > Apply to Directory... This command displays the Options Batch Apply dialogue. The user can select a directory using this dialogue, and apply the option settings to the PDF files within this

directory.

The Apply button tells Options to process all the PDF files in the selected folder.

If the Recursive check box is set, Options processes the PDF files in the selected folder *and* all the folders nested within it. This option is powerful and can be dangerous if incorrectly selected. In order to help prevent accidental use, the **Recursive** check box is never set on opening the Select Folder/Directory dialogue.

Options Online Guide



The option settings used are those from an options.ini file in the selected directory or, if there is none, from the default options.ini file (in the plug_ins directory).

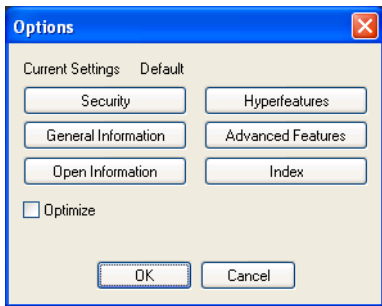
Options > Apply to File... Selecting this menu item displays the Options Select Apply dialogue. The user selects a file to apply the option settings to. The option settings used are from an options.ini file in the same directory as the chosen file, or else the default settings from the options.ini (in the Acrobat plug_ins directory). This dialogue will only allow one file to be selected at a time.

Options Online Guide

Set Group

Options > Default Settings... This menu item displays the main Options dialogue, which allows the user to alter the Options settings to be used in the apply functions. The dialogue displays the name of the options setting file that it is using — in this case ‘Default’ indicates that the settings are stored in the options.ini file in the Acrobat plug-ins directory.

The Optimise check box is used to tell Options to use the Acrobat optimisation facility when it is saving documents.



Options Online Guide

On the dialogue there are six buttons.:

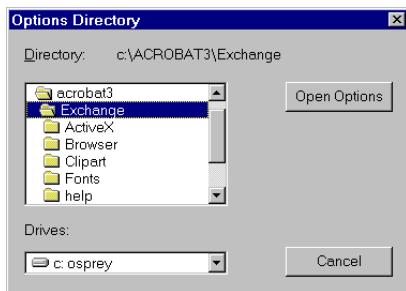
- Security enables the various security options and passwords permitted on documents to be set.
- General Information sets information such as the document's title and author.
- Open Options sets the manner in which the document opens — display bookmarks or thumbnails, starting page number etc..
- Hyperfeatures enables the user to apply a standard feel to the various hyperfeatures within the document.
- Advanced Features enables pages to be reversed, page orientation (landscape or portrait) to be set, hyperfeatures to be copied from a template, and text form field values to be set.
- Multi-Index calls the Multi-Index plug-in to specify Acrobat Search indexes to attach.

Changes here affect the default option settings file.

Options Online Guide

Options>Other Settings... This command displays the Options Directory dialogue, enabling the user to select a directory in which to create or open an options.ini file. Saving such a file in a directory determines how Options will behave if this directory is selected in the Options Batch Apply dialogue (thus overriding the default options).

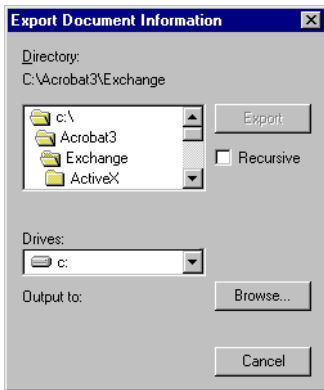
You can set the required options by clicking on the Open Options button, which will display the same dialogue as in “Options > Default Settings...” on page 11, except that the “Current Settings” item will display the directory name selected instead of “Default”.



Options Online Guide

Information Fields Group

Options>Export Info Fields... This dialogue allows the user to select a directory from which to create a CSV file containing the names of all the PDF files and their respective document information field settings. All standard and custom fields are included in the output. The user selects the directory to process in the usual way.



Options Online Guide

The Recursive check box enables the user to choose whether to create the CSV file for only those PDF files within the chosen directory or within all the chosen directory's subdirectories as well (when the box is checked).

The user determines the CSV file to save the information in by clicking on the Browse button. Once a file has been selected the “Output to:” item will show where the data will be saved. The chosen file will be overwritten if it exists already.

The PDF file information is saved to the CSV file by clicking on the Export button.

The CSV file can then be edited in a text editor or in a spreadsheet so that different values can be set for the fields. A typical file might look like the following:

```
C:\temp\file.pdf,"Title","Subject","Author",\  
"Keyword1, keyword2","Creator=FrameMaker  
5.1.1","MyField=Pasture land"
```

Options Online Guide

Note that the fields are separated by commas, with the file name first, followed by Title, Subject, Author and Keywords fields (quoted). Any custom fields then follow in the format:

"CustomKey=CustomValue"

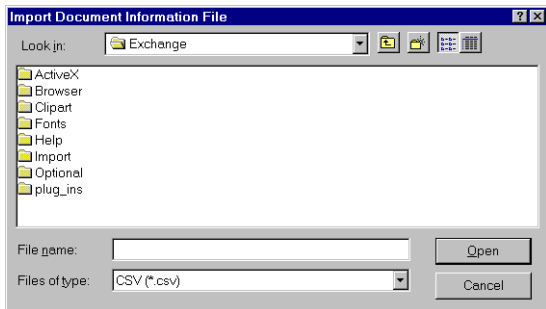
So, in the example on the previous page, there is a custom field called "MyField" with value "Pasture land".

The quoted value may include spaces. Double quotes within the value may be included by using a pair of double quotes, e.g. "QuoteField=a ""quote"" was there" would set the field QuoteField to:

a "quote" was there

Options Online Guide

Options>Import Info Fields... This menu item enables the user to select a CSV file containing a list of PDF files and information field key / value pairs, as created by the Export Info Fields menu item. Once a CSV file has been selected the user can process the files specified in the CSV file by pressing the Open button.



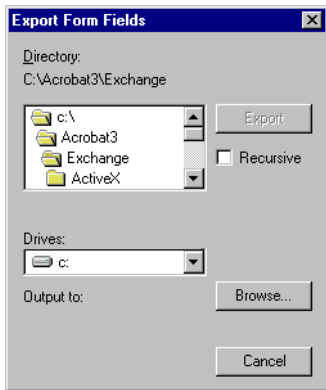
Options Online Guide

Form Fields Group

Options>Export Form Fields. This dialogue is similar to the Export Information Fields dialogue but processes Form Fields.

The user selects a directory from which to create a CSV file containing the names of all the PDF files and their respective form fields.

The Recursive check box enables the user to choose whether to create the CSV file for only those PDF files within the chosen directory or within all the chosen directory's subdirectories as well (when the box is checked).



Options Online Guide

The user determines the CSV file to save the information in by clicking on the Browse button. Once a file has been selected the “Output to:” item will show where the data will be saved. The chosen file will be overwritten if it exists already.

The PDF file information is saved to the CSV file by clicking on the Export button. **This facility only exports text form field data.**

The CSV file can then be edited in a text editor or in a spreadsheet so that different values can be set for the fields. A typical file might look like the following:

```
C:\temp\file.pdf, "ReportNum=42", "Status=Draft"
```

Note that the fields are separated by commas, with the file name first, followed by the form fields in the format:

```
"FieldName=FieldValue"
```

So, in the example above, there is a text form field called “ReportNum” with value “42”, and another

Options Online Guide

field with name “Status” and value “Draft”.

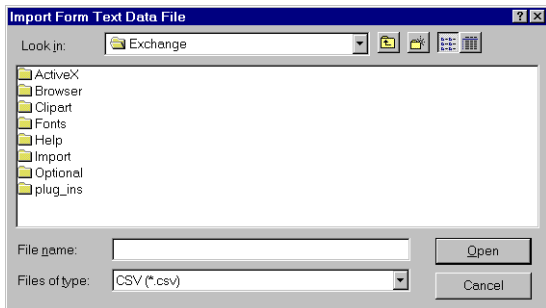
The quoted value may include spaces. Double quotes within the value may be included by using a pair of double quotes, e.g. "QuoteField=a ""quote"" was there" would set the field QuoteField to:

a "quote" was there

Options Online Guide

Options>Import Form Fields... This menu item enables the user to select a CSV file containing a list of PDF files and text form field key / value pairs, as created by the Export Form Fields menu item.

Once a CSV file has been selected the user can process the files specified in the CSV file by pressing the Open button.



Options Online Guide

Other Group

Options>Options OLE Server. This menu item (Windows only) enables the Options OLE server to be turned off or on. When there is a tick next to the menu item the Options OLE Server is running. Clicking on the menu item will turn it off, and clicking again will turn it back on.

When the OLE server is active, Options will accept instructions from another application to process one or more files or directories. These instructions are passed to Options, via OLE, in the form of an enhanced options.ini file. This version of the initialisation file must contain a target path name and a recurse setting in addition to any of the other standard settings allowed in Options (see “Options Initialisation File Specification” on page 36).

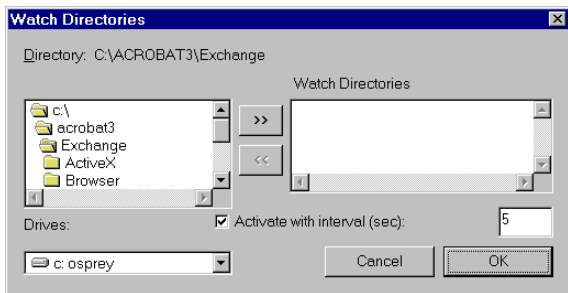
Options>Watched Directory... This allows the user to specify directories which will be watched by Options. Each watched directory will have an In and an Out directory underneath it (which Options will

Options Online Guide

create if they do not exist). When Options detects a new PDF file in the In directory, it will process it using the options specified for the watched directory, if any, or else with the default settings. Once Options has completed the processing, the file will be saved into the Out directory, and the original file will be removed.

The Watched Directory dialogue allows the user to specify the watched directories, and the period between Options checking them for new files.

The left-hand list is used to select a directory to add to the watched directory list, with the directory name



Options Online Guide

shown above it. The >> button will add the selected directory to the watched directory list.

The right-hand list shows all the directories in the watched directory list. If a directory is selected in this list it can be removed by pressing the << button.

The Activate check box activates the watched directory mode. The interval setting, in seconds, must be set to indicate the frequency that Options scans for files.

Options Online Guide

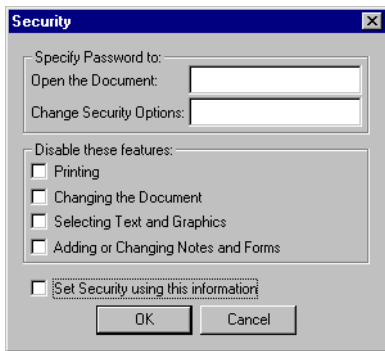
Setting up Options

The sections on the next pages describe how to set up Options settings (default or directory-specific) using the dialogues from one of the settings menu items (see “Set Group” on page 11).

Options Online Guide

Security

The Security dialogue enables the user to change the open and security passwords to be applied to all the documents. It also allows the setting of permissions for restricting printing, changing the document, selecting text and graphics, and adding or changing notes. The ‘Set Security using this information’ check box enables users to maintain security settings but opt not to use them. The security options chosen in this dialogue will only be used if this check box is selected.



Options Online Guide

General Information

The General Information dialogue enables the user to set document information fields.

General Information [X]

Specify Standard Information Fields

Title: this and that

Subject: and

Author: the

Keywords: other

Set document information using this information

Populate Information Fields

Set document information from: Browse...

OK Cancel

The dialogue is split into two parts: the first, Specify Standard Information Fields, is used to explicitly specify the four standard information fields; the second, Populate Information Fields, specifies a

Options Online Guide

CSV file which lists PDF files and the information fields to set in them.

Each section of the dialogue is activated by a check box. Only one part can be active at any time, so you can *either* “Set document information using this information” *or* “Set document information from [the CSV file]”. If the user does not wish to set *any* information fields then neither of the check boxes should be checked.

If the user chooses to explicitly set the standard information fields then the values placed into the Title, Subject, Author and Keywords areas are used to set these values for *all* the documents that are processed. If any of these are left blank then the current document's value for that field is left alone.

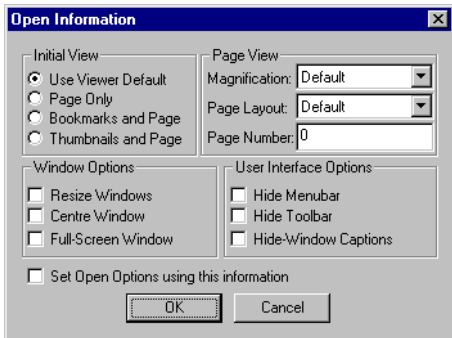
If the user chooses to set the document information fields from a file “Populate Information Fields” section must be completed. The browse button can be used to search for a suitable CSV file to use as input.

Options Online Guide

Open Information

The Open Information dialogue is used to set the document's opening options.

The user can set the document's initial view (page only etc.), the magnification, the page layout (single or two column), the opening page number, the window options (full-screen etc.) and whether menubar etc. should be displayed. These are all the standard options available in Acrobat Exchange (version 3.01).



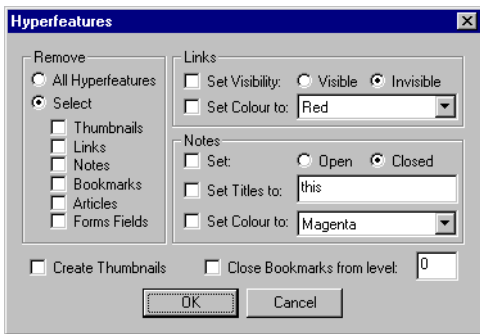
Options Online Guide

The “Set Open Options” check box enables the user to keep a standard set of values but not have to use them. When checked this check box ensures that the values specified are used on the selected documents.

Options Online Guide

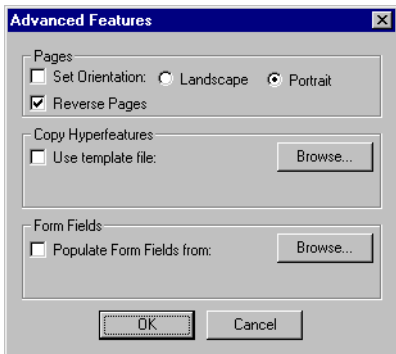
Hyperfeatures

The Hyperfeatures dialogue allows the user to remove hyperfeatures (e.g. notes, links, bookmarks) from the target files; to change the visibility of links; and to change the colour and appearance of links and notes. This dialogue can also be used to create thumbnails, and to selectively close bookmarks from a given level (the top-most bookmark, i.e. the one that is not indented at all, is at level 0).



Options Online Guide

Advanced Features



This dialogue enables the user to do some advanced things with pages, hyperfeatures, and form fields.

The Pages area allows a user to alter the page orientation (to portrait or landscape), and to reverse the page order.

Copy Hyperfeatures. Under Copy Hyperfeatures the user can specify that hyperfeatures — links, article threads, notes, bookmarks, and form fields — are copied from a template PDF file. This means that

Options Online Guide

you can set up a template file with the links, bookmarks etc. that you want copied onto the files being processed. Options will duplicate all the hyperfeatures onto each page of the PDF files being processed. If the template PDF is more than one page, then the first page's hyperfeatures from the template get copied onto the first page of the file being processed, the second page's hyperfeatures onto the second page and so on. This feature might be used to specify all the hyperfeatures on a multi-page file, or a 2-page file might specify different hyperfeatures for odd and even pages.

The “Use template file” check box determines whether a template file is to be used — the file to be used is displayed in the Copy Hyperfeatures section of the dialogue. The browse button in this section can be used to select a template file to use (any PDF file). This setting interacts with the remove hyperfeatures function in the Advanced settings. Both these options can be used at the same time since the removal is carried out before copying hyperfeatures.

Options Online Guide

Copying hyperfeatures specified in this dialogue is guaranteed to take place *after* any hyperfeature removals.

Form Fields. The “Populate Form Fields from” check box can be used to specify that Options should be filling in text form fields using the data from the designated CSV file, as listed in the Form Fields area. The browse button can be used to select an appropriate CSV file. This file specifies a list of PDF files and the information to use, and could be created using the Options>Export Form Fields function. Currently Options only populates text form fields.

Options Online Guide

Index

This dialogue displays the Acrobat Search index (*.idx) which will be attached to the documents when processed with one of the Apply menu items (or OLE). Indexes can be added to or removed from the list by using the Add and Remove buttons respectively.



Options Online Guide

Options Initialisation File Specification

If the user is accessing Options via the OLE server, or wishes to manually set up Options, the Options initialisation file (options.ini) specification will be required.

The Options initialisation file is designed in the same way as a standard Windows initialisation file with groups defined by a section title in square brackets, e.g. [section], followed by key/value pairs in the form “key=value”.

All the values are simple strings of characters, which will be interpreted either as a text string or a number depending on the context. For example:

```
title="Options manual"  
pagenum=23  
fullscreen=1
```

Some keys represent boolean values and so only take the value 0 or 1 — 0 for false and 1 for true.

In general, the options.ini file is split up into sections

Options Online Guide

that correspond to each dialogue used in Options, but there are extra sections which can be used when Options is called from OLE.

On the following pages, the word *string* will mean a string value such as “fly a kite” (with or without quotes); *integer* will mean any integer value such as 0 or 28; *float* will mean any floating point number such as 1.5; *n..m* indicates a range of integer values such as 0..5 and *boolean* will mean either 0 for false or 1 for true. File names, where required, should be specified using full paths. The keys may be upper or lower case, but the values are case sensitive.

For example, part of an options.ini file might be specified as:

```
[info]
title=string
setinfo=boolean
```

with a valid example being:

```
[info]
title="fly a kite"
setinfo=1
```

Options Online Guide

Information Section

[info]

This section corresponds to the General Information settings. Either the four standard document information fields can be set directly here (to be the same across all files processed), or a CSV file containing document information field data can be specified (see “Options>Export Info Fields...” on page 14).

[info]

```
title=string
subject=string
author=string
keywords=string
setinfo=boolean
infofile=string
setinfofile=boolean
```

The `setinfo` key has a boolean value indicating whether this info section data is to be used to populate the four standard document information fields. `infofile` is the name of the CSV file containing the document information field data, and will be used if `setinfofile` is true.

Options Online Guide

Security Section

[security]

This section defines the required security settings. The open and security passwords can be set if required, and the four standard security restrictions (printing, changing the document, selecting text and graphics, and changing notes and form fields) can be requested (e.g. `print=1` disallows printing). Security will only be added if *setsecurity* is true.

[security]

`open=string`

`security=string`

`print=boolean`

`changedoc=boolean`

`select=boolean`

`changenotes=boolean`

`setsecurity=boolean`

Options Online Guide

Open Section

[open]

This section corresponds to the Open Information settings. Since there are many settings they will be described individually.

`pagemode=0..3`

This indicates how the document appears on opening as: default, main window only, with thumbnails, or with bookmarks. The options are as defined in the Acrobat Plug-ins SDK as, respectively, PDDontCare (0), PDUseNone (1), PDUseThumbs (2) and PDUseBookmarks (3).

`pagenum=integer`

This represents the page number that the document will open on. Page 0 is the first page in a document.

`zoomtype=string`

This indicates how the page is viewed when first opened: by default this is XYZ (XYZ scaled), but it can also be Fit (fit page), FitH (fit width) or FitBH (fit visible).

Options Online Guide

`zoom=real`

This only functions if the page view as specified by *zoomtype* is XYZ and represents the percentage scaling factor divided by 100. For example, a zoom of 150% is represented by `zoom=1.5`.

`pdlayoutmode=0..4`

This indicates whether the document opens in two column mode or not. The options are as defined in the Acrobat Plug-ins SDK as, respectively, PDLayoutDontCare (0), PDLayoutSinglePage (1), PDLayoutOneColumn(2), PDLayoutTwoColumnLeft (3), and PDLayoutTwoColumnRight (4).

`resizewindow=boolean`

If *resizewindow* is true, Acrobat will resize the Acrobat window to the size of the document page.

`centrewindow=boolean`

If *centrewindow* is true, Acrobat centres its window on the screen.

Options Online Guide

`fullscreen=boolean`

If *fullscreen* is true the document is opened in full screen mode.

`hidemenubar=boolean`

`hidetoolbar=boolean`

`hidecontrols=boolean`

Setting these to true causes respectively the menubars, the toolbar or window controls to be hidden when the document opens.

`setopen=boolean`

This determines whether the open settings are applied to the documents in this particular run of Options.

Options Online Guide

Advanced Section

[advanced]

This section specifies the features that can be set using the Advanced dialogue.

```
setorientation=boolean  
landscape=boolean
```

These allow the user to set the orientation of all the pages in the document. If *setorientation* is true then the *landscape* value is used to determine which way each page is displayed (if true, each page is displayed landscape).

```
reverse=boolean
```

If *reverse* is true, the pages in the document are put into reverse order.

```
copyhyperfeatures=boolean  
hyperfile=string
```

If *copyhyperfeatures* is true, the hyperfeatures (annotations etc.) found in the file defined by *hyperfile* will be copied into the document(s).

Options Online Guide

`setadvanced=boolean`

setadvanced controls whether the values set under the advanced settings section are used or not.

`optimize=boolean`

optimize sits in this section although it is not part of the Advanced settings. If true, it specifies that the PDF files are saved with the optimisation on.

Options Online Guide

Target Section

[target]

This section is only used in conjunction with the Options OLE server or watched directories. It enables the user to specify a file or directory for Options to process and it also enables the user to set a list of known open and security passwords to try on these target files.

```
path=string  
open[1 to x]=string  
security[1 to x]=string
```

path is a full path to a file or directory to be processed. The passwords are given as strings following a key generated from “open” or “security” plus a number, e.g.

```
open1=first open password  
open2=second open password  
security1=first security password
```

The passwords must be given sequentially otherwise the later entries will be ignored — e.g. *open1=this*, *open3=that* will only result in *open1* being set because *open2* is missing.

Options Online Guide

There are some special fields in the [target] section for setting the target, and whether to recurse or not.

recurse=boolean

If *recurse* is true and the target is a directory, Options will recurse down the following directory listed as a target, processing files in sub-directories too.

path=string

path is a path to a file or a directory and is a required field.

An example of the use of this section is:

```
[target]
recurse=1
path=\temp\docs
```

Options Online Guide

Hyperfeatures Section

[hyperfeatures]

`closebookmarks=boolean`

`closebookmarkslevel=integer`

If *closebookmarks* is true, bookmarks will be closed at the level specified by *closebookmarkslevel*.

`createthumbnails=boolean`

If *createthumbnails* is true, thumbnails will be created for all pages in the target documents.

`setlinksvisible=boolean`

`linksvisible=boolean`

These values determine whether to set link visibility and, if so, whether the links are to be visible or not.

`setlinkscolour=boolean`

`linkscolourname=string`

If *setlinkscolour* is true the colour of all links is changed to the colour specified by *linkscolourname*. Valid colours are: black, blue, green, cyan, red, magenta, yellow, and white.

Options Online Guide

```
setnotescolour=boolean  
notescolourname=string
```

If *setnotescolour* is true the colour of all notes is changed to the colour specified by *notescolourname*. The colours are the same as for *linkscourname* (see above).

```
setnotesopen=boolean  
notesopen=boolean
```

These values determine whether the notes are open or closed.

```
setnotestitle=boolean  
notestitle=string
```

The titles of notes will be changed to *notestitle* if *setnotestitle* is true.

Continued...

Options Online Guide

```
rmvallannots=boolean  
rmvnotes=boolean  
rmvarticles=boolean  
rmvbookmarks=boolean  
rmvlinks=boolean  
rmvthumbnails=boolean  
rmvformfields=boolean
```

These remove various hyperfeatures. If *rmvallannots* is true, all annotations (links, notes, etc) and other hyperfeatures will be removed, else they may be removed individually — notes, articles, bookmarks, links, thumbnails and form fields respectively.

Options Section

[options]

```
[options]  
log=boolean
```

This section is for general settings for the plug-in. If *log* is false, logging will be turned off, if it is true logging will be on. The OLE server log will appear in the default `plug_ins` directory of Acrobat, all other log files appear as `options.log` in the same directory as the `options.ini` file being used.

Options Online Guide

Options OLE Server Section

[ole]

[ole]

start=boolean

If *start* is true, the OLE server will be started the next time Options (and Acrobat Exchange) is started.

Watched Directory Section

[watch]

[watch]

setwatch=boolean

dir[1 to x]=string

interval=integer

If *setwatch* is true, the directories specified by *dir1*, *dir2*, ... will be watched every *interval* 1/60ths of a second.

Multi-Index Section

[indexes]

index[1 to x]=string

index1, *index2*, ... specify the full path to Acrobat Search indexes (e.g. *c:\mydocs\index.pdx*) which should be attached to the target documents by Multi-Index. Multi-Index must be purchased separately.

Options Online Guide

OLE Interface

Calls from a client application to the Options plug-in must talk to an OLE Automation object called “MOSX.Options” or “MOSX.Options.1”.

The OLE server is only connectable when it is run from within Acrobat. Therefore the Options user is currently required to launch Acrobat before connecting from their OLE client. In VisualBasic this would be:

```
CreateObject ("AcroExch.App")
```

There are two calls to run Options — ProcessOptions and ProcessOptionsNoReturn. The user first creates an MOSX.Options object and then calls ProcessOptions if they wish to use the return value method (0 is success and non-zero is failure). ProcessOptionsNoReturn can be used if no return value is required, and the error status can then be read from the last error procedure (available in Visual Basic).

Options Online Guide

ProcessOptions and ProcessOptionsNoReturn take a string as its argument, which carries *all* the information necessary to run Options. The OptionsString is a string containing a partial or complete Options initialisation file. See “Options Initialisation File Specification” on page 36, and particularly the “Target Section [target]” on page 45.

Example:

```
Private Sub SetAcrobatInfo()  
  
Dim obj As Object  
Dim word, result As Long  
Dim info, title, setinfo, target, path  
Dim inifile  
  
info = "[info]" + vbCrLf  
title = "title=Philosophical Cover-ups" +  
vbCrLf  
Subject = "subject=life skills" + vbCrLf  
setinfo = "setinfo=1" + vbCrLf  
target = "[target]" + vbCrLf  
path = "path=c:\coverups\chap1.pdf" + vbCrLf  
inifile = info + title + Subject + setinfo +  
target + path
```

continued...

Options Online Guide

```
Set obj = CreateObject("MOSX.Options")
result = obj.ProcessOptions(inifile)

if result <> 0 then
MsgBox CStr(result)
Set obj = Nothing
End Sub
```

Or:

```
...
On Error Resume Next
obj.ProcessOptionsNoReturn(inifile)
MsgBox CStr(Err.Number)
...
```

Processing Documents with Existing Passwords

Options runs as a two-pass process. The first pass checks that all the files in the selected folder(s) can be processed — that they are writable (i.e. not read-only) and that they are alterable within Acrobat (i.e. security permitting). The second pass applies the selected options to the folder(s).

To aid users altering batches of files with *existing* password protection, Options asks for open and/or security passwords as necessary during the first pass. These passwords are stored for use in the second pass, making the changing of open and security passwords on batches of documents very simple.

If some documents are read only, or the necessary open and/or security passwords for them are not known, Options will skip these documents and process the remaining ones. The user can thus selectively process documents in a folder by open or

Options Online Guide

security password or by making some documents read only. This also enables some documents in a folder to be processed without knowing the passwords to all the documents in it.

Options Online Guide

Credits

Design	David Evans
Development	Peter Sutton, David Evans
Quality Assurance	David Evans, Gareth Black

Further Information

Options is an Acrobat Exchange plug-in from Merlin Open Systems. For information about our other products and services please contact us as shown below, or visit our Web site:

Merlin Open Systems

Nottingham, United Kingdom

Full contact details are available on our web site.

E-mail: info@merlin-os.co.uk

WWW: www.merlin-os.co.uk